



FY25 INTERIM RESULTS

Maiden EBITDA profit achieved ahead of target

February 2025



Disclaimer and Important Notices

This presentation has been prepared by Careteq Limited ACN 612 267 857 (**Company**). It contains general background information only which is current at the date of this presentation unless otherwise specified. It contains selected summary information and does not purport to be all-inclusive, comprehensive or to contain forward-looking information that may be relevant, or which a prospective investor may require in evaluations for a possible investment in the Company. Prospective investors should not rely on the information contained in this presentation and must satisfy themselves as to the accuracy of all such information. This presentation has been prepared based on information available at the time of preparation and is subject to change without notice. In receiving this presentation, each recipient agrees to the foregoing terms and conditions, including any modifications to them. No person is under any obligation to update this presentation at any time after its release.

This presentation is provided for general information purposes only. This presentation does not constitute an offer, invitation, solicitation or recommendation with respect to the purchase or sale of securities in the Company in any jurisdiction. It is not a prospectus, product disclosure statement, pathfinder document or any other type of public offer disclosure document for the purposes of the Corporations Act 2001 (Cth) (**Corporations Act**) and has not been, and is not required to be, lodged with the Australian Securities and Investments Commission. It should not be relied upon by the recipient in considering the merits of the Company or the acquisition of shares in the Company.

This presentation does not constitute investment or financial product advice. It is not intended to be used as the basis for making a financial decision, nor is it intended to constitute legal, tax, accounting or other advice. This presentation has been prepared without taking account of any person's individual investment objectives, financial situation or forward-looking. Before making an investment decision, the recipient should consider its own financial situation, objectives and needs, and conduct its own independent investigation and assessment of the contents of this presentation, including obtaining investment, legal, tax, accounting and such other advice as it considers necessary or appropriate. Any references to or explanations of legislation, regulatory issues, benefits or any other legal commentary (if any) are indicative only, do not summarise all relevant issues and are not intended to be a full explanation of a particular matter. The information in this presentation has been obtained from and based on sources believed by the Company to be reliable. Past performance is not an indication of future performance.

This presentation may contain forward-looking statements, guidance, forecasts, estimates, prospects, projections or statements in relation to future matters that may involve risks or uncertainties and may involve significant items of subjective judgement and assumptions of future events that may or may not eventuate (**Forward Statements**). Forward Statements can generally be identified by the use of forward looking words such as "anticipate", "estimates", "will", "should", "could", "may", "expects", "plans", "forecast", "target" or similar expressions. Forward Statements including indications, guidance or outlook on future revenues, distributions or financial position and performance or return or growth in underlying investments are provided as a general guide only and should not be relied upon as an indication or guarantee of future performance. To the extent that certain statements contained in this presentation may constitute 'Forward Statements' or statements about forward looking matters, then the information reflects the Company's (and no other party's) intent, belief or expectations as at the date of this presentation. No independent third party has reviewed the reasonableness of any such statements or assumptions. None of the Company, its related bodies corporate and their respective officers, directors, employees, advisers, partners, affiliates and agents (together, the **Careteq Parties**) represent or warrant that such Forward Statements will be achieved or will prove to be correct or gives any warranty, express or implied, as to the accuracy, completeness, likelihood of achievement or reasonableness of any Forward Statement contained in this presentation. Except as required by law or regulation, the Company assumes no obligation to release updates or revisions to Forward Statements to reflect any changes. Recipients should form their own views as to these matters and any assumptions on which any of the Forward Statements are based and not place reliance on such statements.

All dollar values are in Australian dollars (\$) or A\$) unless otherwise stated.

An investment in the Company's securities is subject to known and unknown risks, many of which are beyond the control of the Company, including factors and risks specific to the industry in which the Company operates as well as general economic conditions, prevailing exchange rates and interest rates and conditions in the financial markets. The Company does not guarantee any particular rate of return or the performance of the Company, nor does it guarantee any particular tax treatment. Prospective investors should make their own enquiries and investigations regarding all information in this presentation, including the

assumptions, uncertainties and contingencies which may affect future operations of the Company and the impact that different future outcomes may have on the Company.

By accepting this presentation, the recipient agrees to keep permanently confidential all information that it contains. It should not be made available to any other third party without the prior written approval of the Company. Furthermore, no contact should be made with the Company or any of the aforementioned companies' customers, suppliers or shareholders without the express permission of the Company.

The distribution of this presentation to persons or in jurisdictions outside Australia may be restricted by law and any person into whose possession this document comes should seek advice on and observe those restrictions. The presentation is not an offer of securities in the Company for subscription, purchase or sale in any jurisdiction outside Australia, including the United States or in relation to any US person (as defined in Regulation S under the U.S Securities Act of 1933, as amended). Any failure to comply with such restrictions may violate applicable securities law.

No party other than the Company has authorised, permitted or caused the issue, submission, dispatch or provision of this presentation, or takes any responsibility for, or makes or purports to make any statement, representation or undertaking in this presentation and there is no statement in this presentation that is based on any statement by any other party. No person, either as a director, partner or in the employment of the Company has any authority to make, imply, or give any representation or warranty whatsoever in relation to the information contained in this presentation. None of the Careteq Parties take any responsibility for any information in this presentation or any action taken by you on the basis of such information.

To the maximum extent permitted by law, the Careteq Parties:

- exclude and disclaim all liability, including (without limitation) any liability for fraud or negligence, for any expenses, losses, damages or costs incurred either as a result of the information in this presentation being inaccurate or incomplete in any way for any reason, or otherwise arising in connection with this presentation; and
- make no representation or warranty, express or implied, as to the currency, accuracy, reliability or completeness of information in this presentation.



Highlights

H1 FY25 vs. H1 FY24¹

\$4.0m

Income +15.5% on pcp

\$0.2m

Group EBITDA including one-off costs vs. (\$0.2m) in pcp

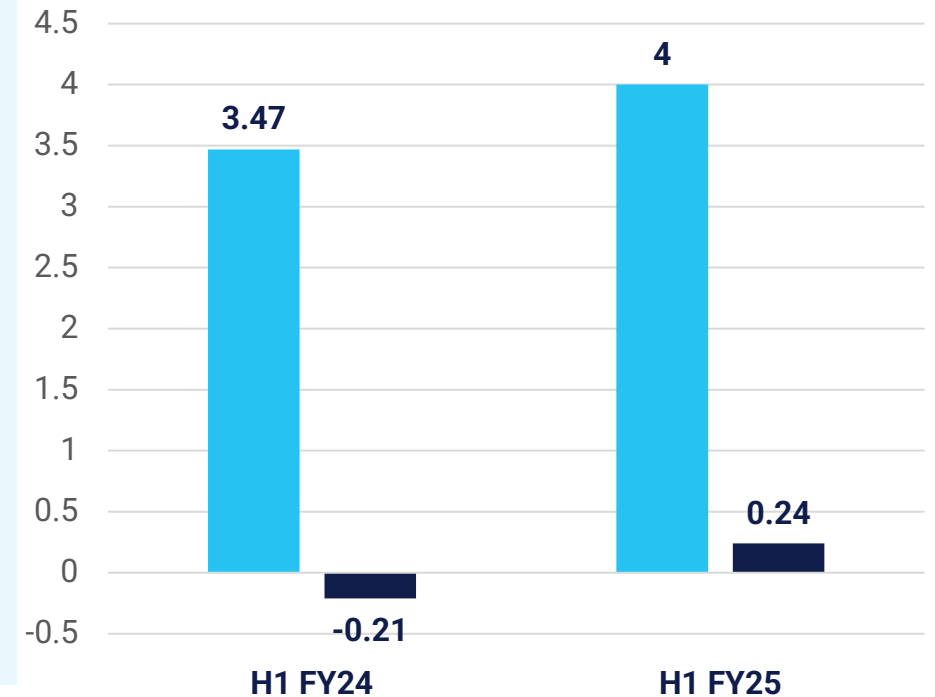
\$0.9m

EHS EBITDA², tracking ahead of FY24 results - continued growth expected for FY25

\$0.15m

Statutory net loss vs. \$1.0m loss in pcp

H1 Revenue and EBITDA ■ Revenue ■ EBITDA





1H FY25

Operational highlights

Careteq's strategic transactions—Sofihub divestment and full EHS acquisition—have delivered positive group EBITDA, with more synergies to come.



Streamlined Focus on Medication Management

The Sofihub divestment and full acquisition of EHS have streamlined operations, allowing Careteq to focus on its profitable core business of medication management. These strategic moves have reduced cash burn and successfully accelerated the path to profitability.

Expansion of HMR Referrals Platform

Increased uptake in Residential Medication Management Reviews (RMMRs) and Home Medicines Reviews (HMRs), driven by the combined pharmacy and GP networks of both platforms.

Integration of Embedded Health Solutions (EHS)

Integration is progressing well, delivering operational synergies and cost efficiencies across residential and home care medication management. More synergies are expected following the upcoming 1-system integration.

Strategic Partnership with MedicAlert and GP Networks

Careteq has partnered with MedicAlert and several large national GP networks to improve medication safety for Australians with chronic conditions. The reach of these partnerships is estimated to be c.100,000 members, c.2,000 GPs and potentially c.500,000 plus referrals onto the HMR Referrals marketplace platform.



Company overview

We are Australia's leading medication management business.

We provide clinical governance and medication management services coupled with marketplace software to drive scale.



Medication Management
(Aged Care)

SERVICES:

Australia's largest provider of medication management services and Quality Use of Medicine to Residential Aged Care and Community Care.

Revenue model:

Residential Medication Management Review (RMMR) and Quality Use of Medicines (QUM) Income via Government funded program

Target Markets:

The Australian residential aged care sector with ~698 operators managing 2,622 facilities and 219,965 beds nationwide



Medication Management
(Home Care)

MARKETPLACE SOFTWARE:

Matching GPs' Home Medication Review Referrals with Accredited Pharmacists to provide continuity of care and improve clinical outcomes for your patients.

Revenue Model:

Marketplace referral origination and submission fees

Target Markets:

Home care and hospital discharge programs



The problem we solve



Medication misadventure

Medication-related harm is a critical issue in healthcare, encompassing adverse drug reactions, medication errors, and complications that jeopardise patient safety and lead to increased healthcare costs.

1 in 2

People aged 65+ are taking 5+ medications

88%

Likelihood of an adverse drug reaction if taking 5+ medications

66%

Reduction in falls risk when removing high-risk medications



How we solve it



Our Accredited Pharmacists conduct Medication Management Reviews to assess a patient's medication regimen and ensure it's appropriate and safe:

01.

Review patient's medications

Review all patient's current medications, including prescribed, over-the-counter, and complementary medications. Also review patient's past medication orders and administration records.

03.

Considers the patient's experience

Consider whether the patient has experienced any adverse drug reactions (ADRs) or has risk factors for them.

02.

Evaluate the safety and effectiveness of medications

Assess whether the patient's medications are safe, appropriate, and effective, and if they're being used as recommended.

04.

Recommends improvements & report

Provide a report to the GP, their patient, and aged/home care provider that contains recommendations to improve the patient's medication management. This report is also uploaded to the patient's My Health Record.

The Medication Management Review process helps to:

Reduce the risk of adverse medication events

Improve the quality of medical care

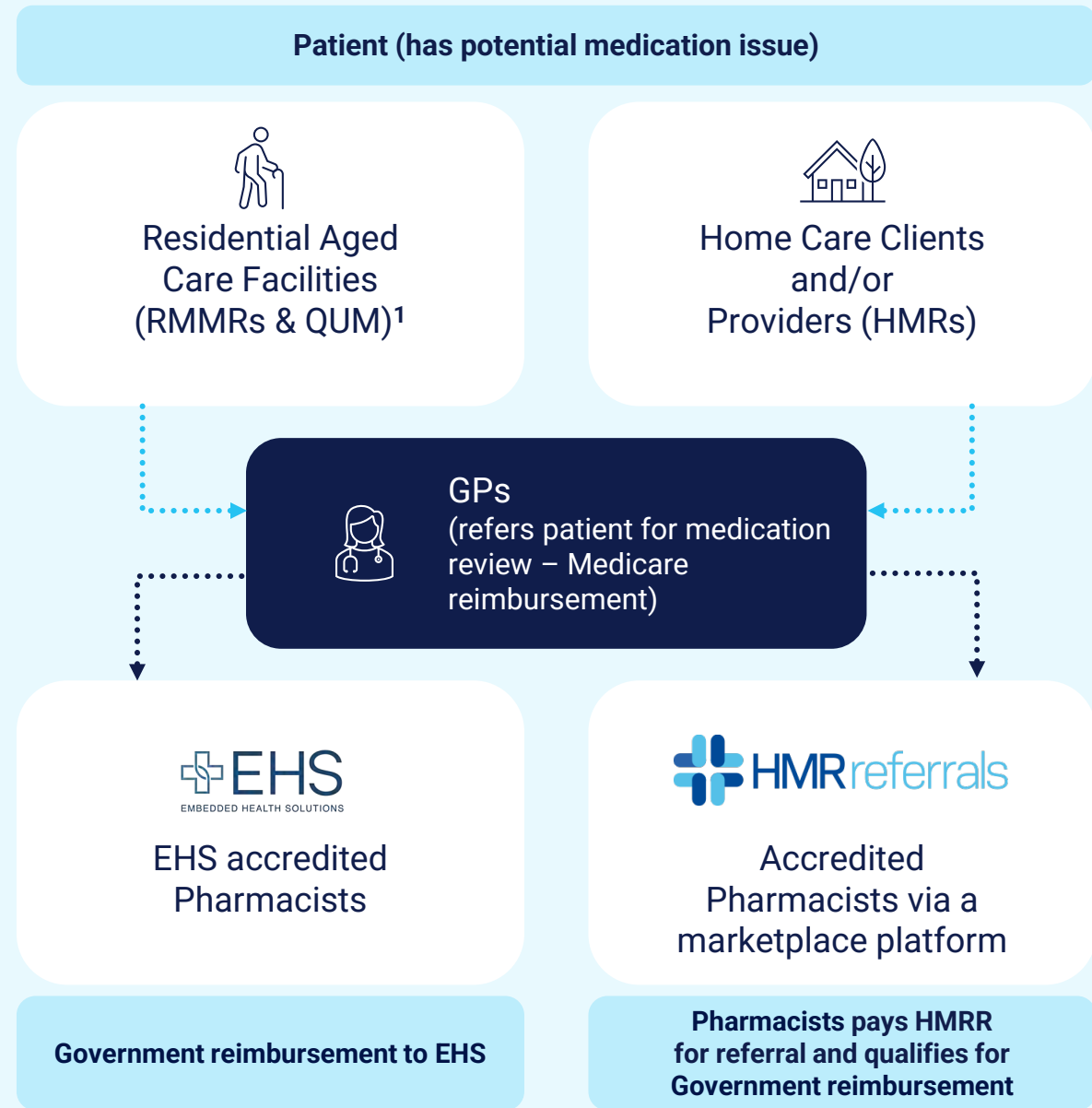
Ensure that residents are taking the best medications for their needs



Key stakeholders and business model

Our value proposition:

Reduction in medication-related harm, reduction in hospitalisations of patients, continuity of care for patients, and increased revenue for GPs and GP clinics.





EHS and HMRR Referrals Synergies

Dedicated and laser focused medication management and clinical governance company

The 100% ownership of EHS enables us to create a market-first integrated platform streamlining both Home Medicines Reviews (HMRs) and Residential Medication Management Reviews (RMMRs).

This unified approach through EHS and HMR Referrals establishes a complete medication management ecosystem spanning residential and home care market.

01

Integrated medication management platform

Combining EHS's residential services with HMR Referrals' home review platform creates a seamless, end-to-end solution across aged care, homecare, and disability sectors.

03

Operational efficiency

System integration unlocks material cost synergies to be realised during FY25 by streamlining operations across both platforms while enhancing overall service quality and profitability.

02

Expanded reach and service offering

EHS's clinical governance expertise complements HMR Referrals' capabilities, enabling us to provide comprehensive medication management from residential facilities to home-based clients.

04

Expanded GP and pharmacist network

With the combined strengths of EHS's clinical governance expertise and HMR Referrals' GP and pharmacist network connections, Careteq solidifies its competitive edge as a leading medication management provider. This synergy supports scalable growth and reinforces our leadership in delivering innovative, patient-centered healthcare solutions.

Q FY25 – strategic pillars and outlook

Strategy Execution →



01

Integrated operating platform on track

- The single software platform integration is on track for roll out during March this year.
- The end result will be a cohesive medication management platform across aged, home, and disability care.

02

Further synergies to be realised

- Following this, further synergies are expected to be unlocked as one platform will deliver an integrated solution across residential aged care, home care, and disability sectors and high-cost legacy platforms are decommissioned.

03

The ATO position paper remains ongoing, with experienced advisers working with the ATO to attempt to resolve the matter

- RSM – R&D Department
- Minter Ellison – Legal

04

FY25 outlook

- EHS EBITDA of \$0.9m for the first half is tracking ahead ahead of budget with reviews, revenue and EBITDA growth expected for FY25.
- 1H FY25 EBITDA from continued operations was \$0.2 million including one off costs which totalled \$127k for the period.
- Careteq expects full year revenue growth in FY25 over pcp and a positive EBITDA from continuing operations result for the full year.

Appendix



Profit & Loss

Account	31 Dec 2024	31 Dec 2023	VAR (%)
Trading Income	\$Am	\$Am	
Total Trading Income	4.00	3.5	+15.5
Other Income			
Total Other Income	0.3	0.3	+11.5
Total Income	4.3	3.8	+15.1
Less Direct Costs			
Total Direct Costs	(2.3)	(1.9)	-20.1
Gross Profit from continuing operations	2.0	1.9	+10.0
GP Margin	47%	49%	-2 pts
Operating Expenses			
Total Operating Expenses	(1.8)	(2.0)	+12.7
EBITDA from continuing operations	0.2	(0.2)	+214.2
Depreciation and Amortisation	(0.2)	(0.1)	-68.8
EBIT from continuing operations	(0.1)	(0.3)	+121.9
Interest	(0.1)	(0.1)	-49.0
Profit/(Loss) Before Tax from continuing operations	(0.1)	(0.4)	+83.3
Income Tax Expense	(0.0)	(0.3)	+100
Profit/(Loss) After Tax from continuing operations	(0.1)	(0.7)	+89.8



Balance sheet

Assets	
Current Assets	\$Am
Cash at Bank	0.85
Trade and Other Receivables	1.18
Inventories	0.00
Contract Assets	0.75
Other Current Assets	0.09
Total Current Assets	2.87
Non-current Assets	
Property, Plant and Equipment	0.04
Intangibles	2.52
Right of Use Assets	0.14
Other	0.12
Total Non-Current Assets	2.82
Total Assets	5.69

Liabilities	
Current Liabilities	\$Am
Trade and Other Payables	1.38
Lease Liabilities	0.07
Financial Liabilities	0.98
Employee Benefits	0.43
Income tax	0.51
Total Current Liabilities	3.37
Non-current Liabilities	
Financial Liabilities	1.19
Employee Benefits	0.10
Lease Liabilities	0.09
Total Non-current Liabilities	1.38
Total Liabilities	4.75
Net Assets	0.94
Equity	
Issued Capital	25.49
Reserves	0.54
Accumulated Losses	(25.09)
Total Equity	0.94



Cash flow statement

	31 Dec 2024	31 Dec 2023
CASH FLOWS FROM OPERATING ACTIVITIES	\$Am	\$Am
Receipts from customers (inclusive of GST)	4.47	3.96
Government grants and tax incentives	0.00	0.03
Payments to suppliers and employees (inclusive of GST)	(4.98)	(5.20)
Net cash used in operating activities	(0.51)	(1.21)
CASH FLOWS FROM INVESTING ACTIVITIES		
Payments in relation to business acquisitions	(0.30)	(0.28)
Payments for property, plant and equipment	(0.02)	(0.04)
Payments for intangible assets – Sofihub R&D	0.00	(0.38)
Disposal of property, plant and equipment	0.00	0.00
Proceeds from disposal of business	0.58	0.00
Net cash used in investing activities	0.26	(0.70)
CASH FLOWS FROM FINANCING ACTIVITIES		
Proceeds from issue of shares	0.00	2.47
Share issue transaction costs	0.00	(0.20)
Payments of lease liabilities	(0.04)	(0.04)
Interest and other finance costs paid	(0.03)	0.00
Dividends paid	(0.09)	0.00
Net cash from/(used in) financing activities	(0.16)	2.23
Net increase / (decrease) in cash and cash equivalents	(0.41)	0.32
Cash and cash equivalents at the beginning of the financial half-year	1.25	1.85
Effects of exchange rate changes on cash and cash equivalents	0.01	0.00
Cash and cash equivalents at the end of the financial half-year	0.85	2.17



Corporate overview

CAPITAL STRUCTURE

237m

Shares on issue

59.9%

Top 20 ownership

0.014

Share price (27/02/2025)

\$3.3m

Market capitalisation

\$0.8m

Cash (31/12/2024)

\$2.2m

Vendor debt (31/12/2024)

BOARD OF DIRECTORS



MARK SIMARI Executive Chairman

Over 16 years' Board experience in a diverse range of organisations.

Co-Founded and served as Managing Director of Paragon Care (ASX: PGC) from 2008 to 2018, leading its transformation into one of Australia and New Zealand's premier independent healthcare equipment and supplies providers.

Extensive experience in finance, investment, equity capital markets and M&A



BRETT CHEONG Non-Executive Director

Over 40 years of background experience within the healthcare industry at all levels of management.

Founder and Managing Director of Axishealth Pty Ltd. Board member of Paragon Care for 9 years including the role of Marketing Manager.

Extensive management skills focusing on Sales & Marketing, Product Design & Development, Manufacturing and International product sourcing



STEPHEN MUNDAY Non-Executive Director

Over 40 years business experience in Australia and North America including Chief Financial Officer & Company Secretary positions in several listed companies.

Extensive experience in marketing, business development, supply management, commercial financial management, change management, compliance and governance.

Previously Chief Financial Officer of Paragon Care Limited



Thank You



MARK SIMARI

Executive Chairman
mark.simari@careteq.com.au

CORPORATE ADDRESS

CARETEQ, Level 10, 99 Queen Street
Melbourne, 3000